

Key Stage One Newsletter

Summer 1 2024



Welcome back!

We hope that you have all had a lovely Easter! Hopefully this half term will bring some warmer weather – please make sure that all jumpers, cardigans etc. are labelled to avoid items getting lost or mixed up!

Our learning this half term

Our **English** texts for this half term are 'Billy and the Beast' where we will be creating wanted posters and character descriptions, as well as writing a recipe based on the text. We will then study the non-fiction texts 'Rosa Parks' from the Little People, Big Dreams series. Our focus for this text will be writing a diary entry from the point of view of Rosa Parks, as well as a newspaper report based on factual events.

In **science** we will be looking at all things plants. We will learn about the basic structure of plants and trees, as well as learning about what plants need to grow and stay healthy. As part of this we will be planting our own seeds and taking care of them to make them grow. Please use the attached knowledge organiser with your child to support this learning.

In our **R.E.** lessons we will look at different leaders, considering the enquiry question 'What makes some people inspiring to others?'

In **geography** we will be looking at the difference between weather and climate, including different climate zones in different parts of the world.

In **computing** we will be using Scratch Junior to develop our coding and programming skills. We will be learning how to create and debug simple programs, including programming our characters to perform simple actions based on an algorithm.



Our guided reading text for this half term is **The Magic Finger** by Roald Dahl:

Maths

In maths this half term we will be learning to:

- Recognise and find half, one quarter, one third and three quarters of a shape or number
- Understand the equivalence between two quarters and one half
- Tell the time to o'clock, half past, quarter past and quarter to (as well as to the nearest five minutes for Y2)
- Create tally charts and block diagrams

Spelling and Maths Shed



Spelling homework will be set on Spelling Shed each week and a paper copy of the spellings to practise will also be sent home. Spellings will be tested during our phonics session on **Friday**. In addition, your child will continue to receive **weekly times table homework each week on MathShed**.



As always, if you have any questions please feel free to come and ask one of us!

Many thanks for your support!

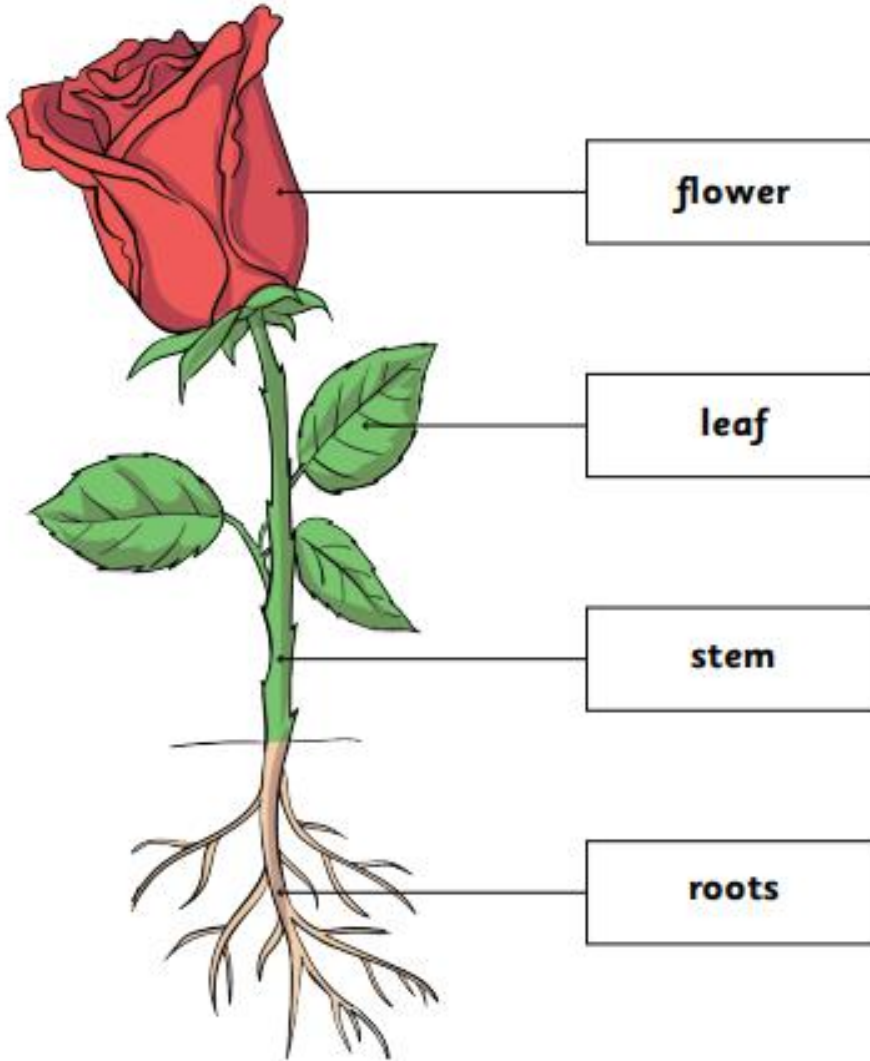
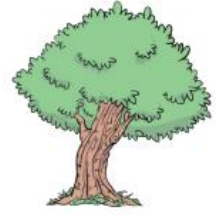
Reading

Please make sure that you read with your child as often as possible, and **at least 4 times per week**. This really does make a difference in helping children to enjoy reading and helps to reinforce their phonics learning. **Reading diaries will be checked weekly** Children who have their reading diary signed 4 times each week will receive House Points and a reward at the end of the half term. Your child will have a set day for changing their reading books each week.

The reading treat at the end of this half term will be: **ice creams!**

Miss Hislop, Miss Gallacher, Mrs Trenowden and Miss Heaton ☺

Plants are **living things**. They **move**, take in and give out **gases**, are **sensitive**, **grow**, **reproduce**, get rid of **waste** and consume **nutrients**. These are all types of **plants**.



Plants we eat

There are some plants that **we can eat**. **Fruits** and **vegetables** grow as part of a plant. **Herbs** are a plant too.



How do plants grow?

We use **seeds** to grow new plants. New seeds grow as **part of the plant**. Seeds can be found **inside some fruits**.

